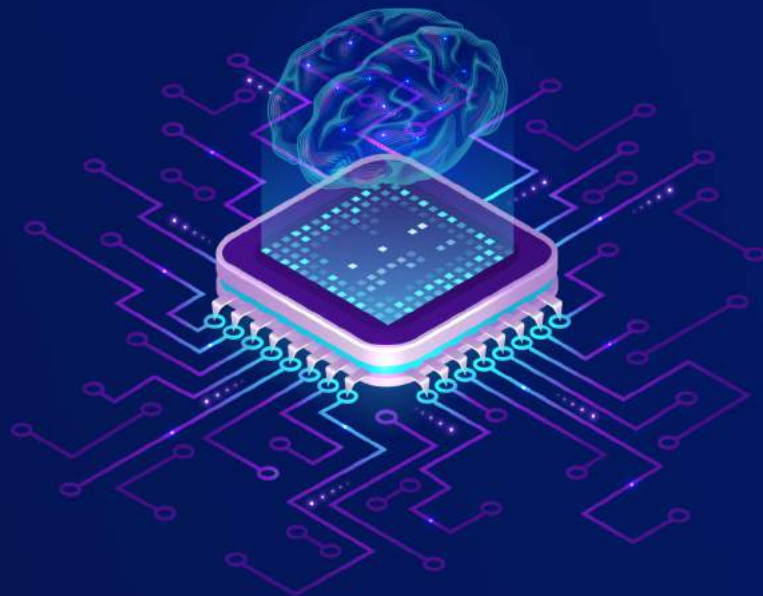




Lexicon
Centre of Research
& Innovation

By Lexicon Management Institute of Leadership & Excellence



WHO WE ARE

Living up to our name, The Lexicon Centre of Research & Innovation aims to provide data based, actionable insights, solutions and strategy to real life business issues across functions to the decision makers across the government, the industry and the community. While bridging the gap between academics and industry practices we are committed to adding value at both strategic and tactical levels.

HOW IT WORKS



ADVANTAGES WE OFFER

- Leverage the best of both the worlds Academic Excellence and Industry Pragmatism
- Statistically robust research methodologies
- Pragmatic & actionable insights, solutions & recommendations
- Fully customized solutions to your business / marketing issues
- Complete transparency, no black box models deployed
- No technology barriers

OUR EXPERTISE



AUTOMOTIVE



GENERAL CONSUMER
BEHAVIOR



HOSPITALITY, LEISURE
& TOURISM



EDUCATION



MSME



RETAIL
(Both traditional &
Digital Services)

